

UNIT PLANS



LINKBAY
RESIDENCES



DISCLAIMER ALL RIGHTS RESERVED. THE DESIGN, PLANS, ELEVATIONS AND VIEWS IN THE PROPOSED FLOOR PLAN ARE INDICATIVE OF THE KIND OF DEVELOPMENT PROPOSED IN THIS PROJECT AND ITS FINALITY IS SUBJECT TO THE APPROVAL OF THE CONCERNED AUTHORITIES. FURNITURE, FLOOR COVERING, CURTAINS, MIRRORS, SOFT FURNISHINGS, GADGETS, ETC. ARE SHOWN FOR REFERENCE PURPOSE ONLY AND NOT PART OF THE OFFERING. MINOR VARIATIONS (+/- 3%) IN ACTUAL CARPET AREAS MAY OCCUR. ALL INTERNAL DIMENSIONS FOR CARPET AREA ARE CALCULATED FROM UNFINISHED WALL SURFACE. THE CARPET AREA OF TOILETS IS INCLUSIVE OF LEDGE WALLS (IF ANY). CONVERSION 1 SQ. MTR. = 10.764 SQ. FT. THESE MARKETING MATERIAL DOES NOT CONSTITUTE AN OFFER AND / OR CONTRACT OF ANY TYPE BETWEEN THE DEVELOPER AND THE PURCHASER. ANY PURCHASER OF THESE DEVELOPMENT SHALL BE GOVERNED BY THE TERMS AND CONDITIONS OF THE AGREEMENT FOR SALE ENTERED BETWEEN THE PARTIES AND NO DETAILS MENTIONED IN THIS PRINTED MATERIAL SHALL IN ANY WAY GOVERN SUCH TRANSACTION. MAHARERA REGISTRATION NO(S): CODENAME WESTBAY PHASE I HAS BEEN REGISTERED WITH **MAHARERA UNDER REGISTRATION NO. P51800047539** ARE AVAILABLE AT WEBSITE [HTTP://MAHARERA.MAHAONLINE.GOV.IN](http://MAHARERA.MAHAONLINE.GOV.IN).



UNIT 2 - 3 BHK COMPACT	SQ.M.	SQ.F.T.
RERA CARPET AREA	95.23 SQ.M.	1025 SQ.FT.
RERA BALC. & UTILITY	11.93 SQ.M.	128 SQ.FT.
TOTAL RERAAREA	107.16 SQ.M.	1153 SQ.FT.



WING D - FLAT NO.2
3RD TO 7TH, 10TH TO 14TH, 16TH TO 19TH FLOOR PLAN





WING E - FLAT NO.1
3RD TO 7TH, 10TH TO 14TH, 16TH TO 19TH FLOOR PLAN





UNIT 3 2 BHK COMPACT	SQ.M.	SQ.FT.
RERA CARPET AREA	74.62 SQ.M.	803 SQ.FT.
RERA BALC. & UTILITY	1.91 SQ.M.	20 SQ.FT.
TOTAL RERAAREA	76.53 SQ.M.	824 SQ.FT.



WING E - FLAT NO.3
3RD TO 7TH, 10TH TO 14TH, 16TH TO 19TH FLOOR PLAN





UNIT 2 - 3 BHK COMPACT	SQ.M.	SQ.F.T.
RERA CARPET AREA	95.23 SQ.M.	1025 SQ.F.T.
RERA BALC. & UTILITY	11.93 SQ.M.	128 SQ.F.T.
TOTAL RERAAREA	107.16 SQ.M.	1153 SQ.F.T.



WING F - FLAT NO.2

3RD TO 7TH, 10TH TO 14TH, 16TH TO 19TH FLOOR PLAN





UNIT 1 - 3 BHK LARGE	SQ.M.	SQ.F.T.
RERA CARPET AREA	129.54 SQ.M.	1394 SQ.F.T.
RERA BALC. & UTILITY	11.95 SQ.M.	128 SQ.F.T.
TOTAL RERAAREA	141.49 SQ.M.	1522 SQ.F.T.



WING F - FLAT NO.1
3RD TO 7TH, 10TH TO 14TH, 16TH TO 19TH FLOOR PLAN





UNIT 1 - 4 BHK LARGE	SQ.M.	SQ.F.T.
RERA CARPET AREA	149.13 SQ.M.	1605 SQ.FT.
RERA BALC. & UTILITY	15.86 SQ.M.	170 SQ.FT.
TOTAL RERAAREA	164.99 SQ.M.	1776 SQ.FT.



LAUNCHING
Stellar
OFF FUN REPUBLIC, ANDHERI (W)

WING G - FLAT NO.1 3RD TO 7TH, 10TH TO 14TH, 17TH TO 19TH FLOOR PLAN



LinkBay Residences Sales Lounge: Gr. Floor, Glory House, Andheri (W).

DISCLAIMER
ALL RIGHTS RESERVED. THE DESIGN, PLANS, ELEVATIONS AND VIEWS IN THE PROPOSED FLOOR PLAN ARE INDICATIVE OF THE KIND OF DEVELOPMENT PROPOSED IN THIS PROJECT AND ITS FINALITY IS SUBJECT TO THE APPROVAL OF THE CONCERNED AUTHORITIES. FURNITURE, FLOOR COVERING, CURTAINS, MIRRORS, SOFT FURNISHINGS, GADGETS, ETC. ARE SHOWN FOR REFERENCE PURPOSE ONLY AND NOT PART OF THE OFFERING. MINOR VARIATIONS (+/- 3%) IN ACTUAL CARPET AREAS MAY OCCUR. ALL INTERNAL DIMENSIONS FOR CARPET AREA ARE CALCULATED FROM UNFINISHED WALL SURFACE. THE CARPET AREA OF TOILETS IS INCLUSIVE OF LEDGE WALLS (IF ANY). CONVERSION 1 SQ. MTR. = 10.764 SQ. FT. THESE MARKETING MATERIAL DOES NOT CONSTITUTE AN OFFER AND / OR CONTRACT OF ANY TYPE BETWEEN THE DEVELOPER AND THE PURCHASER. ANY PURCHASER OF THESE DEVELOPMENT SHALL BE GOVERNED BY THE TERMS AND CONDITIONS OF THE AGREEMENT FOR SALE ENTERED BETWEEN THE PARTIES AND NO DETAILS MENTIONED IN THIS PRINTED MATERIAL SHALL IN ANY WAY GOVERN SUCH TRANSACTION. MAHARERA REGISTRATION NO(S): CODENAME WESTBAY PHASE I HAS BEEN REGISTERED WITH MAHARERA UNDER REGISTRATION NO. P51800047539 ARE AVAILABLE AT WEBSITE [HTTP://MAHARERA.MAHALINE.GOV.IN](http://MAHARERA.MAHALINE.GOV.IN).



UNIT 2 - 2 BHK COMPACT	SQ.M.	SQ.F.T.
RERA CARPET AREA	75.84 SQ.M.	816 SQ.FT.
RERA BALC. & UTILITY	7.83 SQ.M.	84 SQ.FT.
TOTAL RERAAREA	83.67 SQ.M.	900 SQ.FT.



LAUNCHING
Stellar
OFF FUN REPUBLIC, ANDHERI (W)

WING G - FLAT NO.2
3RD TO 7TH, 10TH TO 14TH, 17TH TO 19TH FLOOR PLAN

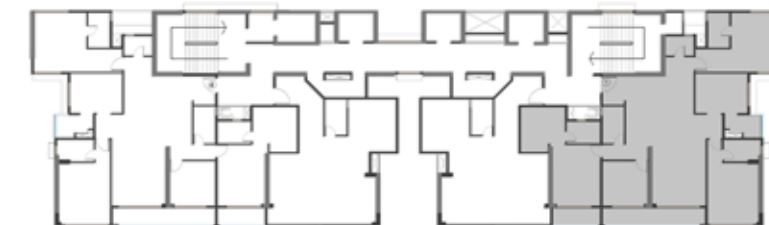


LinkBay Residences Sales Lounge: Gr. Floor, Glory House, Andheri (W).

DISCLAIMER
ALL RIGHTS RESERVED. THE DESIGN, PLANS, ELEVATIONS AND VIEWS IN THE PROPOSED FLOOR PLAN ARE INDICATIVE OF THE KIND OF DEVELOPMENT PROPOSED IN THIS PROJECT AND ITS FINALITY IS SUBJECT TO THE APPROVAL OF THE CONCERNED AUTHORITIES. FURNITURE, FLOOR COVERING, CURTAINS, MIRRORS, SOFT FURNISHINGS, GADGETS, ETC. ARE SHOWN FOR REFERENCE PURPOSE ONLY AND NOT PART OF THE OFFERING. MINOR VARIATIONS (+/- 3%) IN ACTUAL CARPET AREAS MAY OCCUR. ALL INTERNAL DIMENSIONS FOR CARPET AREA ARE CALCULATED FROM UNFINISHED WALL SURFACE. THE CARPET AREA OF TOILETS IS INCLUSIVE OF LEDGE WALLS (IF ANY). CONVERSION 1 SQ. MTR. = 10.764 SQ. FT. THESE MARKETING MATERIAL DOES NOT CONSTITUTE AN OFFER AND / OR CONTRACT OF ANY TYPE BETWEEN THE DEVELOPER AND THE PURCHASER. ANY PURCHASER OF THESE DEVELOPMENT SHALL BE GOVERNED BY THE TERMS AND CONDITIONS OF THE AGREEMENT FOR SALE ENTERED BETWEEN THE PARTIES AND NO DETAILS MENTIONED IN THIS PRINTED MATERIAL SHALL IN ANY WAY GOVERN SUCH TRANSACTION. MAHARERA REGISTRATION NO(S): CODENAME WESTBAY PHASE I HAS BEEN REGISTERED WITH MAHARERA UNDER REGISTRATION NO. P51800047539 ARE AVAILABLE AT WEBSITE [HTTP://MAHARERA.MAHALINE.GOV.IN](http://MAHARERA.MAHALINE.GOV.IN).



UNIT 1 - 4 BHK LARGE	SQ.M.	SQ.F.T.
RERA CARPET AREA	159.28 SQ.M.	1714 SQ.FT.
RERA BALC. & UTILITY	15.86 SQ.M.	170 SQ.FT.
TOTAL RERAAREA	175.14 SQ.M.	1875 SQ.FT.



WING G - FLAT NO.1 15TH FLOOR PLAN



LAUNCHING
Stellar
OFF FUN REPUBLIC, ANDHERI (W)

LinkBay Residences Sales Lounge: Gr. Floor, Glory House, Andheri (W).

DISCLAIMER
ALL RIGHTS RESERVED. THE DESIGN, PLANS, ELEVATIONS AND VIEWS IN THE PROPOSED FLOOR PLAN ARE INDICATIVE OF THE KIND OF DEVELOPMENT PROPOSED IN THIS PROJECT AND ITS FINALITY IS SUBJECT TO THE APPROVAL OF THE CONCERNED AUTHORITIES. FURNITURE, FLOOR COVERING, CURTAINS, MIRRORS, SOFT FURNISHINGS, GADGETS, ETC. ARE SHOWN FOR REFERENCE PURPOSE ONLY AND NOT PART OF THE OFFERING. MINOR VARIATIONS (+/- 3%) IN ACTUAL CARPET AREAS MAY OCCUR. ALL INTERNAL DIMENSIONS FOR CARPET AREA ARE CALCULATED FROM UNFINISHED WALL SURFACE. THE CARPET AREA OF TOILETS IS INCLUSIVE OF LEDGE WALLS (IF ANY). CONVERSION 1 SQ. MTR. = 10.764 SQ. FT. THESE MARKETING MATERIAL DOES NOT CONSTITUTE AN OFFER AND / OR CONTRACT OF ANY TYPE BETWEEN THE DEVELOPER AND THE PURCHASER. ANY PURCHASER OF THESE DEVELOPMENT SHALL BE GOVERNED BY THE TERMS AND CONDITIONS OF THE AGREEMENT FOR SALE ENTERED BETWEEN THE PARTIES AND NO DETAILS MENTIONED IN THIS PRINTED MATERIAL SHALL IN ANY WAY GOVERN SUCH TRANSACTION. MAHARERA REGISTRATION NO(S): CODENAME WESTBAY PHASE I HAS BEEN REGISTERED WITH MAHARERA UNDER REGISTRATION NO. P51800047539 ARE AVAILABLE AT WEBSITE [HTTP://MAHARERA.MHAONLINE.GOV.IN](http://MAHARERA.MHAONLINE.GOV.IN).



Disclaimer: LINKBAY RESIDENCES PHASE 1 has been registered with MahaRera under registration no. P51800047539 are available at website <http://maharera.mahaonline.gov.in>.